

# CHP Focus - Supporting CHP Development

**Benjamin Sang**

CHPQA Team

# Agenda

## Topics covered today:

- What is CHP Focus?
- What are CHP Focus activities?
- What are the benefits of CHP Focus?
- CHP Focus helpline.
- CHP Focus website.

# What is CHP Focus?

CHP Focus is a DECC funded initiative

Free at the point of use

Established in 2008



**OBJECTIVE: TO SUPPORT DEVELOPMENT OF CHP**

# CHP Focus Activities

**Promotion** – “CHP the flexible option”

**Education** – Events, seminars & workshops

**Information** – Comprehensive unbiased website

**Tools Development** – Web applications & online tools

# CHP Focus benefits

**Workshops** – Previous workshops on CHP in industrial, Health and Education sectors – 2012 watch this space!



**Website** – Modern, accessible site including latest CHP news



**Helpline** – Free expert advice



# CHP Focus website - <http://chp.decc.gov.uk>

Over 300 pages of information

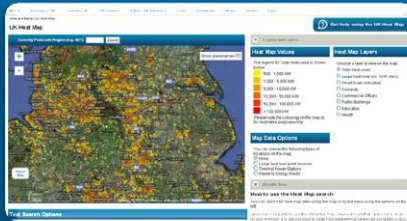
Includes sections on:

- Finance
- Project development
- Environment
- Technologies



# SEARCH: CHP FOCUS

# Website Tools



CHP Development Map



CHP Site Assessment Tool

## Public CHP Database

- New interactive, dynamic CHP Development Map
- Simple Web App to replace CHP Sizer
- Can model packaged CHP systems
- Database of operational CHP
- Search by Region, CHP type, Sector

# New CHP Development Map

**UK CHP Development Map**

Select Area | Radius Search | Draw Shape | Polygon View

Map View | Satellite & Labels | Satellite

Cancel current tool  
Clear map  
Toggle fullscreen  
Search Buffer 1 Km  
Note: 20Km is maximum allowed for this search tool

Results Area

Sector Totals | Large Heat Load Sites (0)

The table below shows the sector totals within your search area.

The sector total results below are from:  
Birmingham D47, Birmingham D49, Birmingham D50, Birmingham D53, Birmingham D59, Birmingham D60, Birmingham D68

Sector Name	Share	Total KW
Communications and Transport	0.94%	3,570 KW
Commercial Offices	11.11%	42,140 KW
Domestic	44.22%	167,668 KW
Education	3.55%	13,457 KW
Government Buildings	8.31%	31,515 KW
Hotels	6.41%	24,288 KW
Health	7.55%	28,621 KW
Other	2.63%	9,961 KW
Small Industrial	3.38%	12,816 KW
Prisons	0.82%	3,102 KW
Retail	4.64%	17,584 KW
Sport and Leisure	1.72%	6,517 KW
Warehouses	4.73%	17,931 KW
<b>Total heat load in Area</b>		<b>379,169 KW</b>

Download this search result data as a Microsoft Excel File

- CHP Development map has UK wide coverage
- Tool allows CHP developers to search for heat loads in specific areas

## New Map includes:

- Refined and updated heat load data;
- Greater zoom resolution;
- Radius and Area Search tools;
- Ability to search on local authority level and middle and low level output layers providing greater search resolution.

# CHP Site Assessment Tool

- Simple and intuitive to use
- Allows users to assess the viability of CHP
- For a given site it provides the 5 best options showing their:
  - CHP capacity,
  - Capital cost,
  - Payback period,
  - Net Present Value,
  - Cost savings &
  - Primary energy savings
- Login facility allows registered user to save scenarios

The screenshot displays the 'Results' tab of the CHP Site Assessment Tool. It shows a summary of user input and a table of five recommended options. The tool indicates that the site is both technically feasible and cost-effective for CHP.

**Technically Feasible: YES**  
**Cost Effective: YES**

Units	Option 1	Option 2	Option 3	Option 4	Option 5
Technology	Reciprocating Engine	Reciprocating Engine	Reciprocating Engine	Reciprocating Engine	Reciprocating Engine
CHP Capacity	kWe 500	150	175	125	100
Electricity Generated	MWh / yr 2,490	789	800	895	609
Useful heat Recovered	MWh / yr 1,270	1,200	1,242	1,116	917
CHP Fuel consumption	MWh / yr 7,152	2,459	2,580	2,248	2,032
Primary Energy Savings	MWh / yr 1,084	1,218	1,181	1,068	796
CHP Capital Costs	£ £491,000	£176,000	£201,000	£151,000	£125,000
Annual Cost Savings	£ / Yr £137,000	£66,000	£66,000	£58,000	£50,000
NPV	£ £673,000	£386,000	£364,000	£344,000	£297,000
Payback Period	Yrs 3.6	2.7	3.0	2.6	2.5
CO <sub>2</sub> Saving against all fossil fuels	TCO <sub>2</sub> / Yr 586	362	356	321	280
	% 31%	19%	19%	17%	14%
CO <sub>2</sub> Saving against all fuels including renewables and nuclear	TCO <sub>2</sub> / Yr 195	238	231	212	165
	% 12%	15%	15%	13%	10%
CO <sub>2</sub> Saving against modern CCGT	TCO <sub>2</sub> / Yr 60	196	187	175	132
	% 4%	13%	13%	12%	9%

Note: For entries shown in red and marked as not viable in the table above, this is due to them having a negative NPV at the discount rate you selected and they are therefore not cost effective on this basis. However the payback period should also be considered.

Download as CSV

# CHP Focus helpline

- Specific Expert Advice
- Local call rate number
- Referral to appropriate contacts for more detailed information where necessary.



**0845 365 5153**

# Contact us

Contact the Administrator:

Mail: CHP Focus

The Gemini Building

Fermi Avenue

Harwell, Didcot

OX11 0QR

[E-mail: chpfocus@aeat.co.uk](mailto:chpfocus@aeat.co.uk)